

14694

RESOLUTION NO. 03-77

**RESOLUTION CREATING RURAL SPECIAL IMPROVEMENT MAINTENANCE  
DISTRICT TO BE KNOWN AS R.S.I.D. #704M  
FLAMING CREEK SUBDIVISION**

WHEREAS, the Board of County Commissioners of Yellowstone County, Montana, met in regular session and executed a Resolution of Intent to Create a Rural Special Improvement Maintenance District #704M for Flaming Creek Subdivision, as described in Exhibit A and more particularly shown in Exhibit B (map) and,

WHEREAS, the Clerk and Recorder published the Notice of the passage of Resolution of Intent to Create the District in the Billings Gazette on July 18<sup>th</sup> and July 25<sup>th</sup>, 2003, and mailed a copy of the Notice to every person, firm or corporation owning property in the District; and,

WHEREAS, the Board of County Commissioners finds, determines and declares that:

1. The public interest or convenience requires the creation of a Rural Special Improvement Maintenance District as hereinafter described;
2. The costs of providing maintenance shall be borne by owners of the property included within the boundaries of the Rural Special Improvement Maintenance District with all existing and future lots being assessed an equal amount on a per lot basis;
3. The purpose of forming the District is to provide the maintenance, preservation, and repair of the streets located within the boundaries of this District;
4. The Commissioners have been presented with a valid Petition to create the proposed District;

NOW, THEREFORE, BE IT RESOLVED by the Board of County Commissioners of Yellowstone County as follows:

1. The Commissioners have acquired jurisdiction to create a Rural Special Maintenance District No. 704M to provide for the annual maintenance, preservation and repair of the streets. The costs are more particularly described in Exhibit D. The estimated costs shown do not preclude other eligible street maintenance expenditures.
2. All of the costs of the District shall be assessed equally on a per lot basis for all existing and future lots. (See Exhibit C.) The boundaries of this District are shown on the map attached as Exhibit B and described in Exhibit A.
3. The number of the Rural Special Maintenance District thereof shall be No. 704M.

Page 2  
Resolution Creating  
R.S.I.D.# 704M

4. All lots accessing their property from the streets will benefit from proposed R.S.I.D. and shall be assessed for road maintenance. All lots will be assessed an equal amount based upon the total cost of the maintenance.

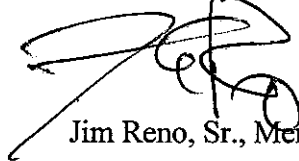
PASSED AND ADOPTED by the Board of County Commissioners of Yellowstone County, Montana, this 29<sup>th</sup> day of July, 2003.

Board of County Commissioners  
Yellowstone County, Montana

(SEAL)



Bill Kennedy, Chair

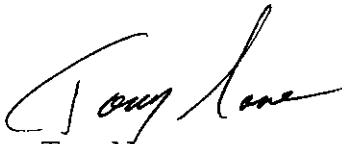


Jim Reno, Sr., Member



John Ostlund, Member

ATTEST:



Tony Nave  
Clerk and Recorder

RESOLUTION OF INTENT TO CREATE RSID 704M-FLAMING CREEK SUBDIVISION  
EXHIBIT A: LEGAL DESCRIPTION

PETITION TO ESTABLISH A RURAL SPECIAL IMPROVEMENT DISTRICT (RSID)

SECTION B  
LEGAL DESCRIPTIONS & OWNERSHIP REPORTS (ATTACHED)

FLAMING CREEK Sub.Division  
SE 1/4 of SECTION 12 T1N R26E  
PMM Yellowstone County MONTANA

Lot 1 Block 1

Lot 2 Block 1

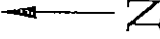
Lot 3 Block 1

**RESOLUTION OF INTENT TO CREATE RSID 704M-FLAMING CREEK SUBDIVISION  
EXHIBIT B: MAP**

1  
2  
3  
4

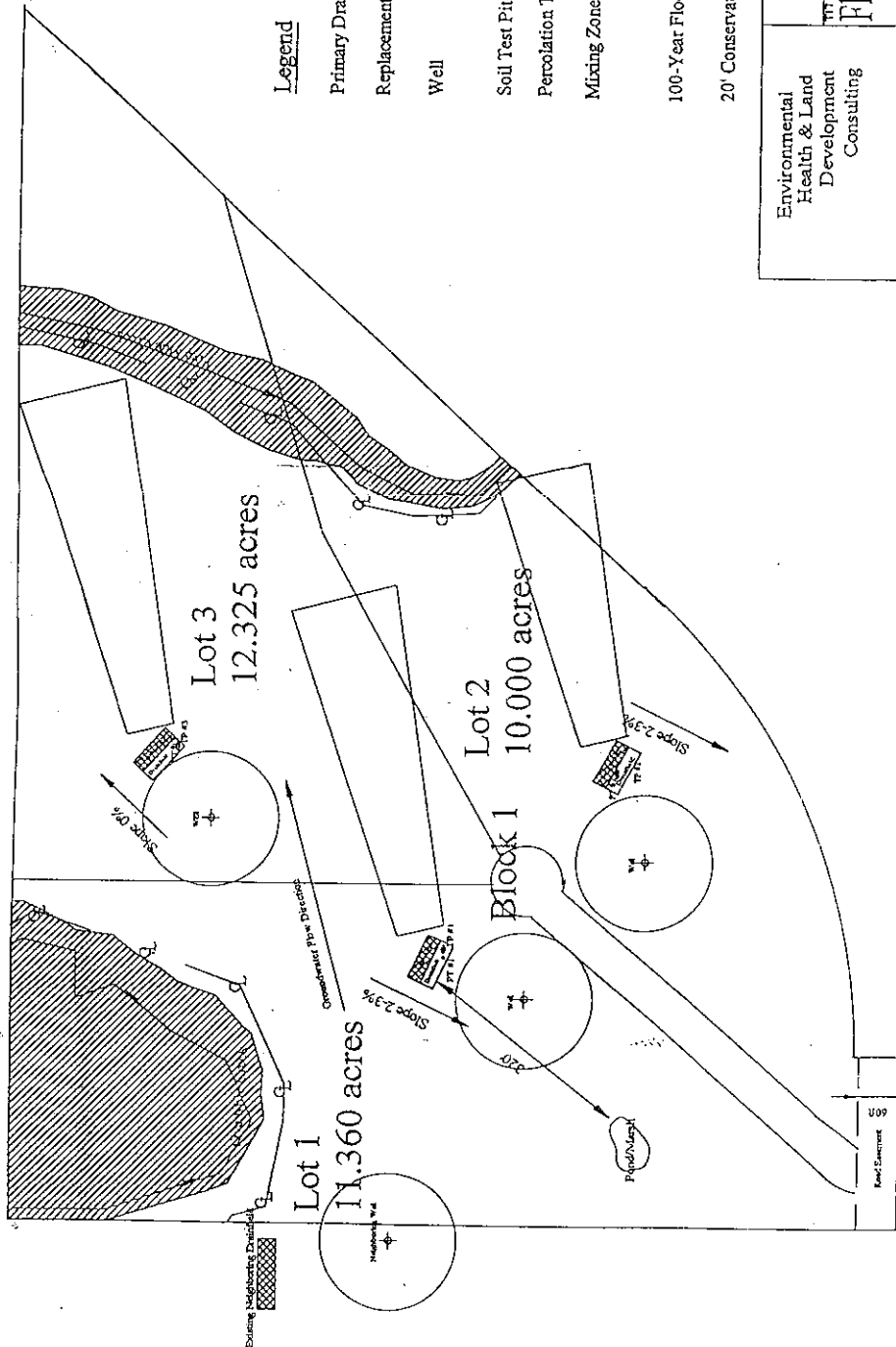
**Flaming Creek Subdivision**  
T 01N, R 26E, SE 1/4 of Section 12  
Yellowstone County

Scale 1"=200'



**Legend**

- Primary Drainfield
- Replacement Drainfield
- Well
- Soil Test Pit
- Percolation Test
- Mixing Zone
- 100-Year Floodplain
- 20' Conservation Easement (center line)



Environmental Health & Land Development Consulting	RS Consulting, LLC (406) 633-2090 616 1st Street S.W. Park City, MT 59063
TITLE	Flaming Creek Subdivision
SIZE	8 1/2" x 11" (11" x 8 1/2")
SCALE	1"=80'
Drawn By:	TW
SHEET	1
Lot Layout	

Reviewed by the Local Reviewing Authority  
Under contract with the  
Department of Environmental Quality/PCD  
Local Reviewer: *[Signature]* Date: 1/23/03  
Accepted under contract  
DEQ Representative: *[Signature]* Date: 1-27-03

**RECEIVED**  
JAN 24 2003  
MT. DEPT. OF ENV. QUALITY  
PERMITTING & COMPLIANCE DIV.



RESOLUTION OF INTENT TO CREATE RSID 704M-FLAMING CREEK SUBDIVISION  
 EXHIBIT D: ESTIMATED COSTS

PETITION TO ESTABLISH A RURAL SPECIAL IMPROVEMENT DISTRICT (RSID)

SECTION C  
 ESTIMATED ANNUAL MAINTENANCE COST

FALL MAINTENANCE:

ACTIVITY/IMPROVEMENT	ESTIMATED COST
	\$
	\$

WINTER MAINTENANCE:

ACTIVITY/IMPROVEMENT	ESTIMATED COST
	\$
	\$

SPRING MAINTENANCE:

ACTIVITY/IMPROVEMENT	ESTIMATED COST
	\$
	\$

SUMMER MAINTENANCE:

ACTIVITY/IMPROVEMENT	ESTIMATED COST
ROAD Blading 10 hr @ \$100/hr	\$ 1000 -
RE GRAVELING	\$ 500 -

TOTAL ESTIMATED ANNUAL MAINTENANCE COST: 1500 -